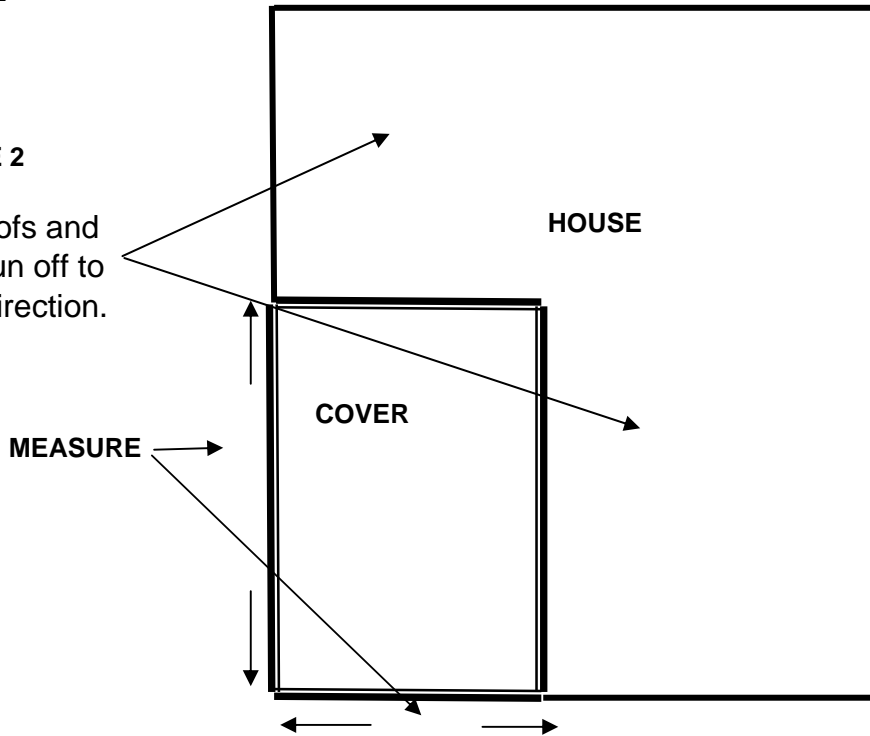
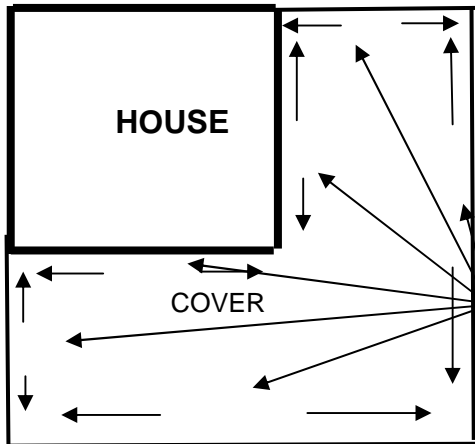


EXAMPLE 1

EXAMPLE 2  
Look at pitch of roofs and  
amount of water run off to  
determine panel direction.



**EXAMPLE 3**

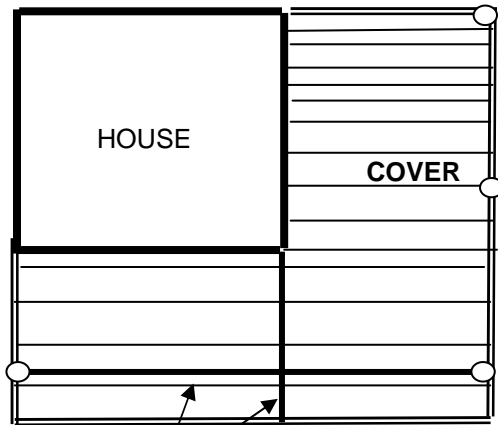


THIS COVER CAN BE DONE IN FOUR DIFFERENT WAYS, AS SHOWN BELLOW.

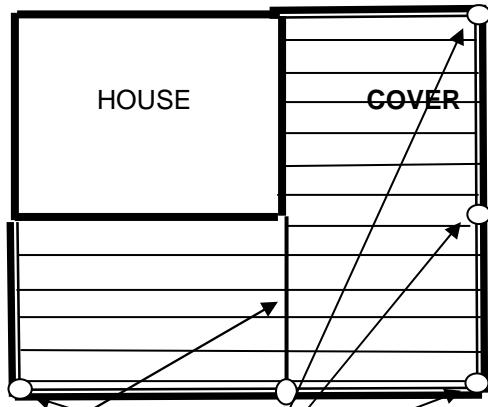
COVER

MEASURE

**EXAMPLE 3-B**

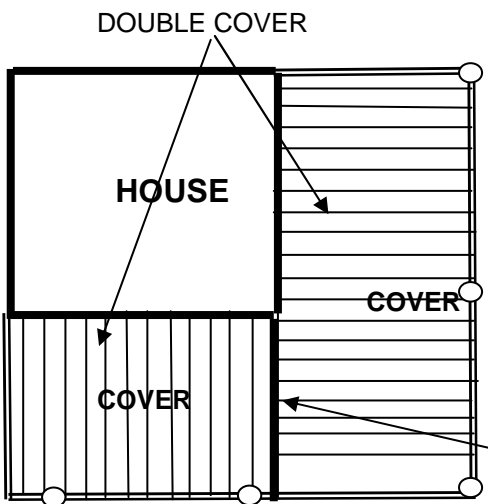


**EXAMPLE 3-A**



SUPPORTS

**EXAMPLE 3-C**



DOUBLE COVER

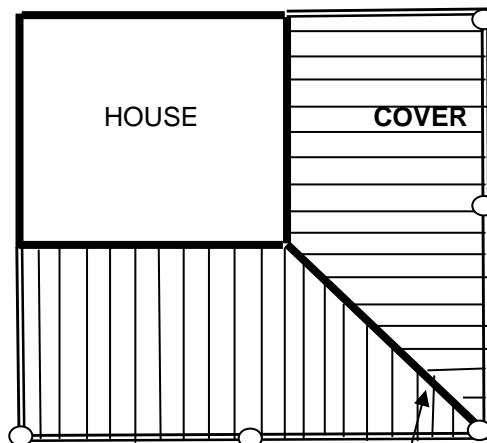
HOUSE

COVER

COVER

GUTTER

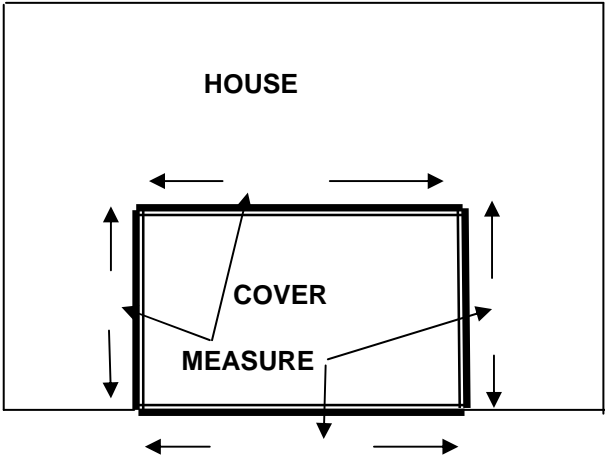
**EXAMPLE 3-D**



45 DEGREE ANGLE

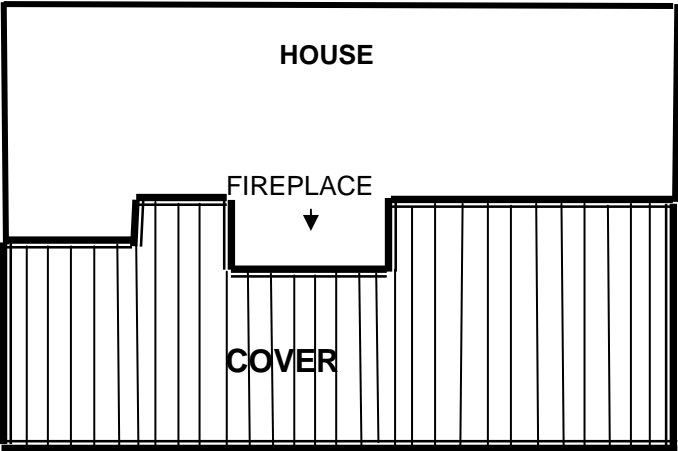
DOUBLE GUTTER

**EXAMPLE 4**



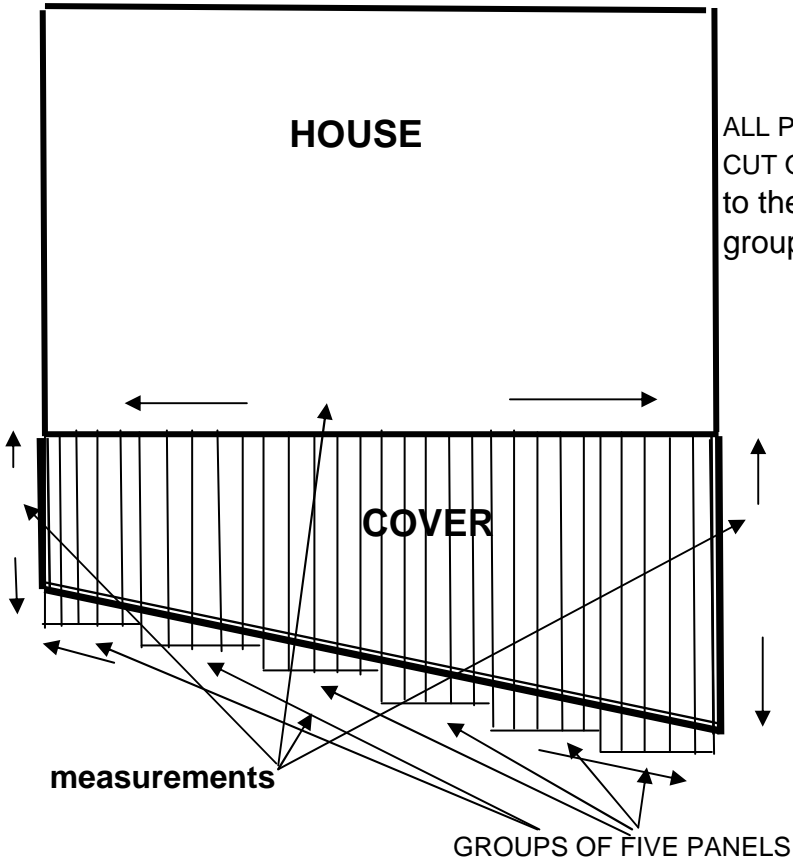
This cover can also be done with support brackets that hold cover above roof line so run off from house roof uses existing house gutters.

**EXAMPLE 5**



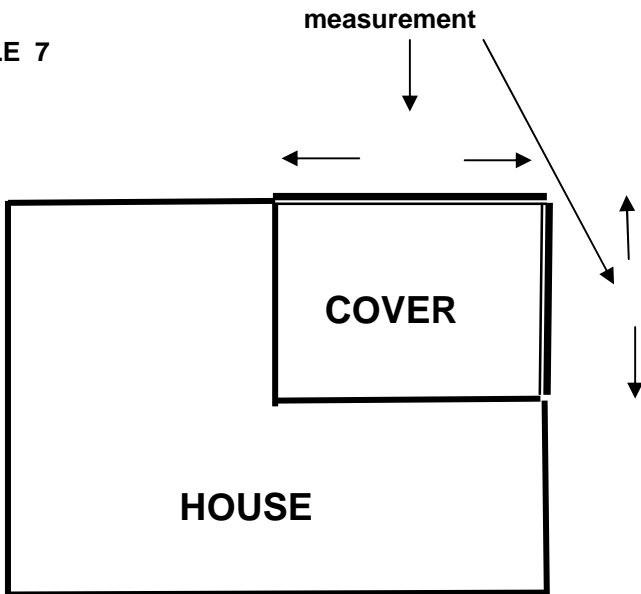
Cover with cut around for fireplace.

EXAMPLE 6

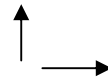


ALL PANEL ANGLES MUST BE CUT ON SITE. Panels are cut to the different lengths in groups of five.

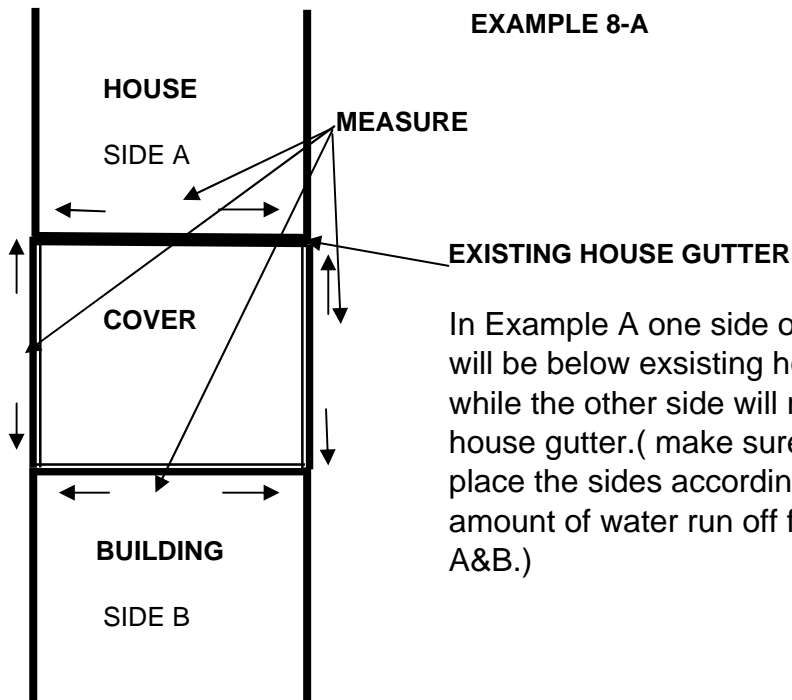
EXAMPLE 7



Run panels in the direction you want water to drain. Options are panel directions



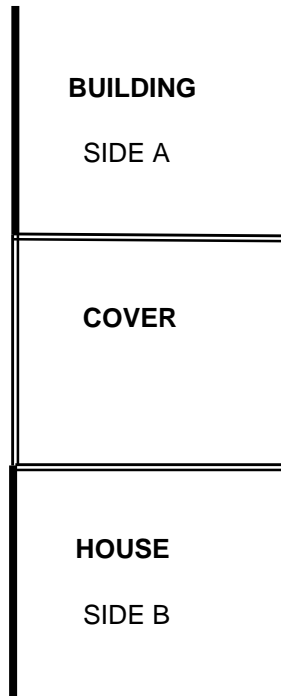
**EXAMPLE 8-A**



In Example A one side of the cover will be below existing house gutter, while the other side will replace house gutter. ( make sure that you place the sides according to the amount of water run off from sides A&B.)

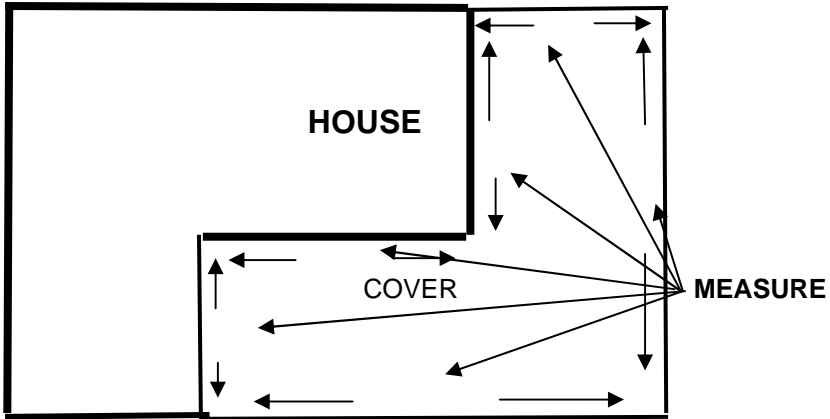
**EXAMPLE 8-B**

In Example B cover is supported above roofs with support brackets and water run off from sides A&B still use existing house gutters. ( This is something to think about if you have trees near your cover that could block water drainage.)

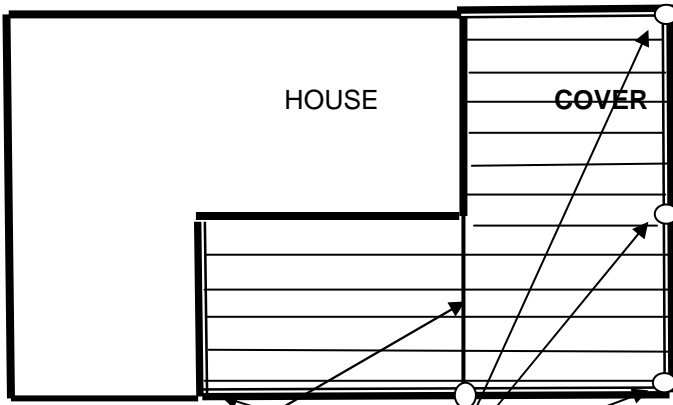


When choosing panel direction for this cover take into consideration, amount of water run off from sides A&B, trees near cover, and were you want downspouts.

EXAMPLE 9

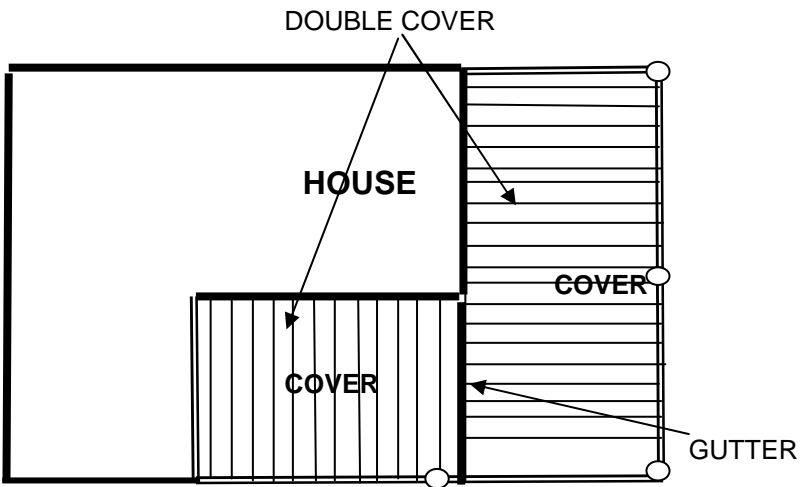


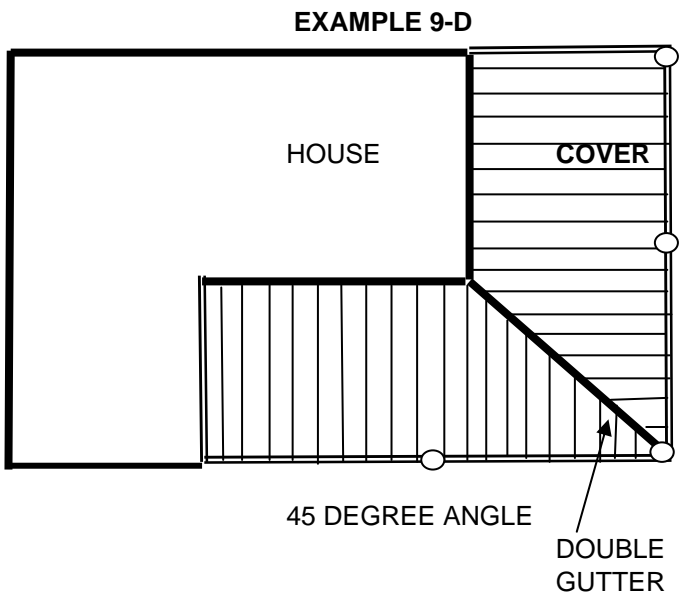
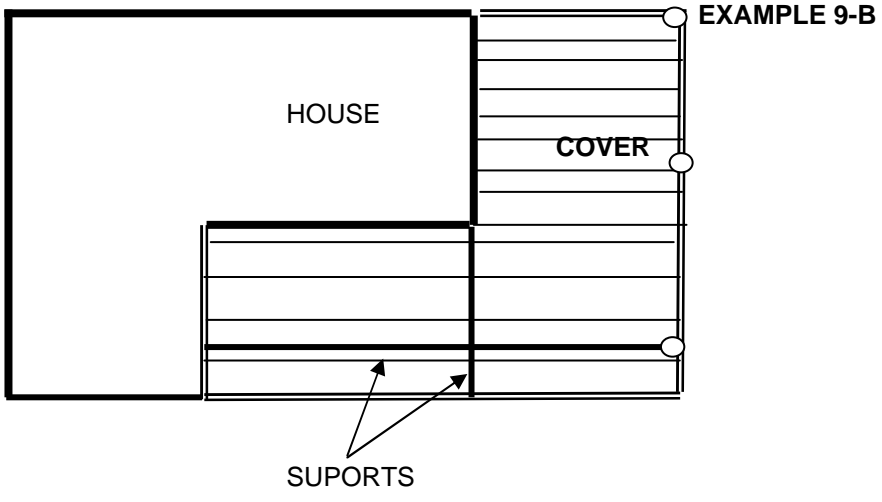
EXAMPLE 9-A

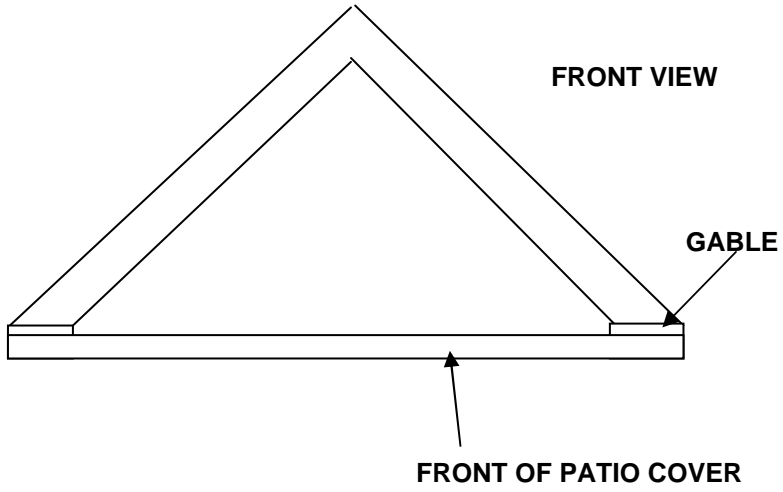


THIS COVER CAN BE DONE IN FOUR DIFFERENT WAYS, AS SHOWN.

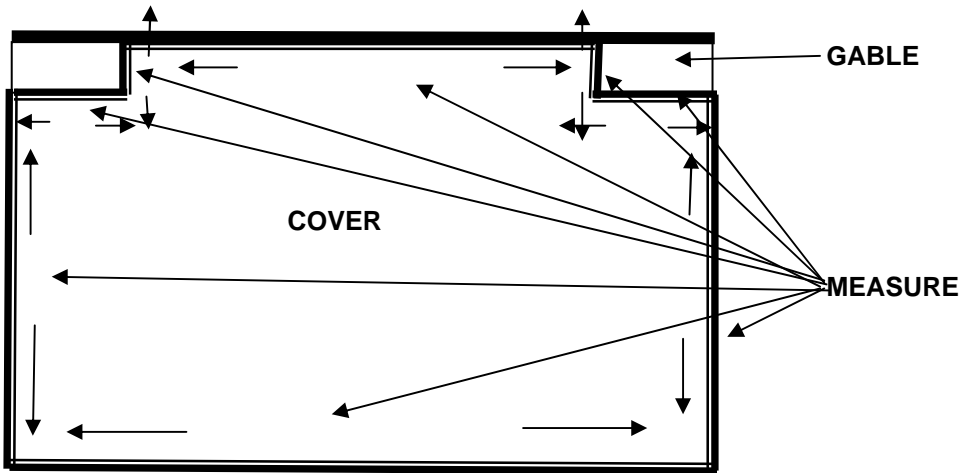
EXAMPLE 9-C



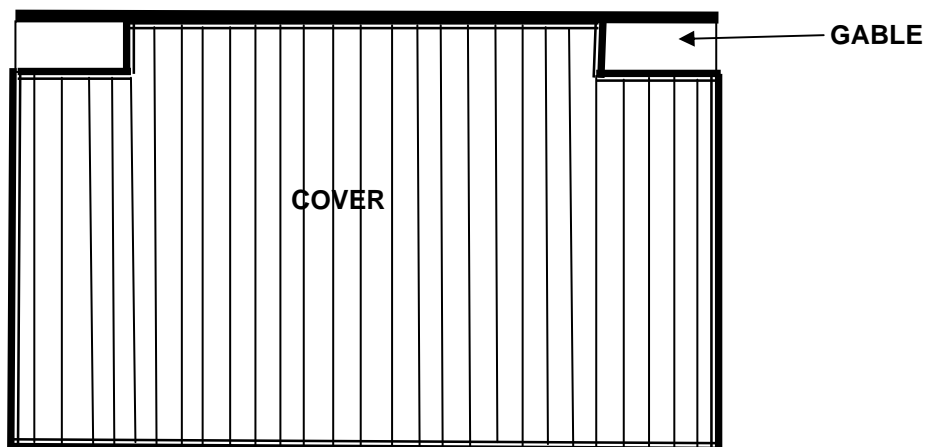




EXAMPLE 10

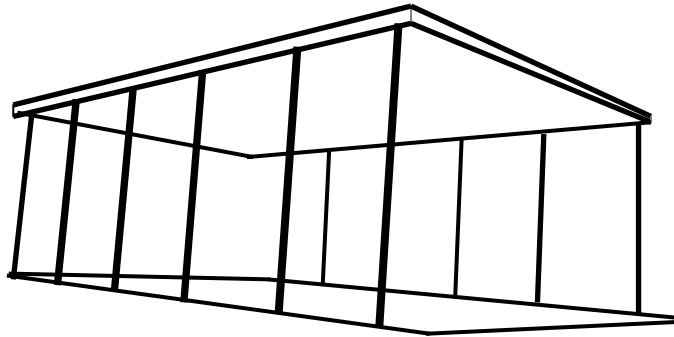


Cover with cut arounds for gable.



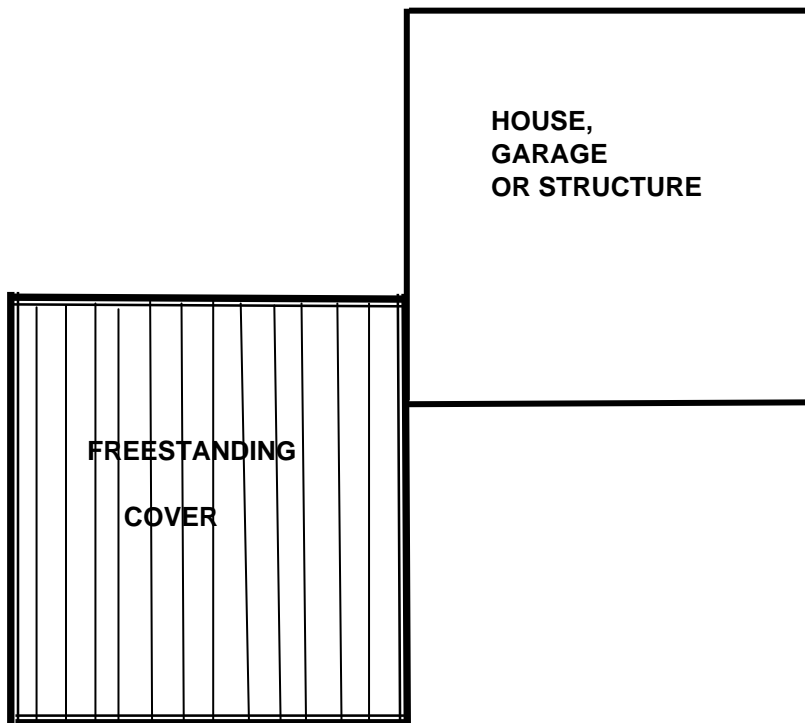


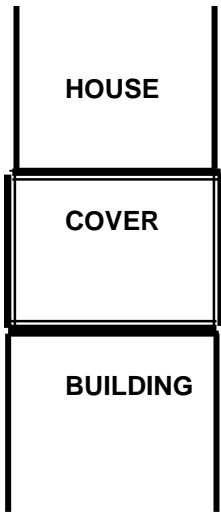
**EXAMPLE 11**



A freestanding cover can be attached to the concrete with special made larger post brackets. But also know that for every foot of your freestanding cover you can attach to a house, garage, or other structure will make your cover stronger. See example below.

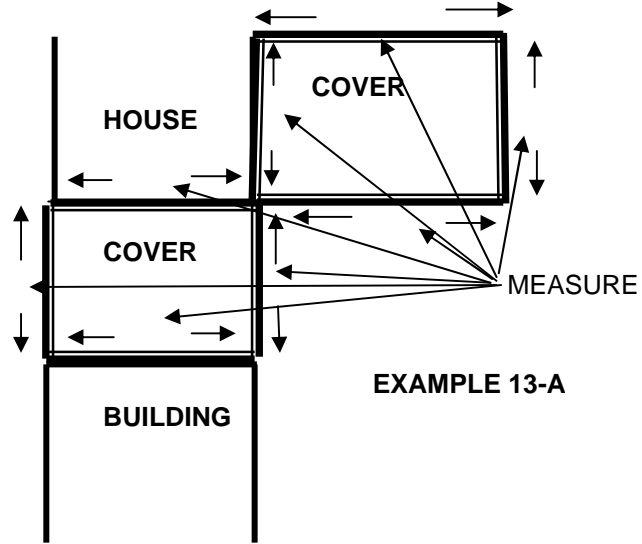
**EXAMPLE 12**



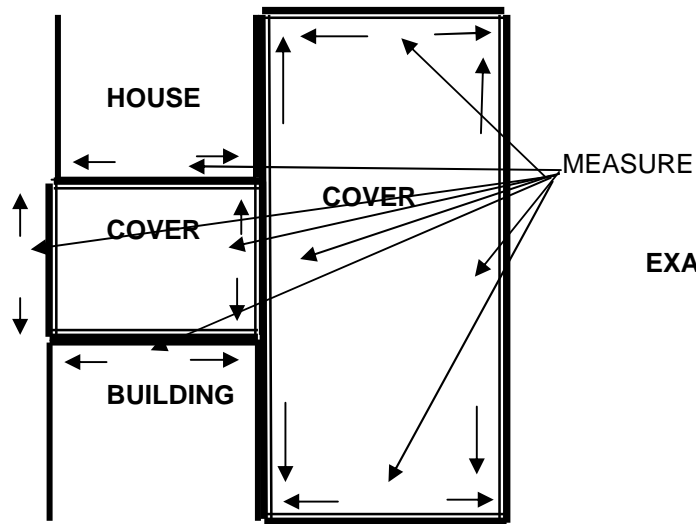


EXAMPLE 13

Our covers can be added to. Bellow are example of how you could add to this cover.



EXAMPLE 13-A



EXAMPLE 13-B





